

Premium  
Commercial  
Spaces



Veer-9



'VEER 9' offers premium commercial space in a prime locality, surrounded by a large, affluent residential population.

Choose from Shops, Showrooms and Offices in various size options. An attractive elevation, robust infrastructure facilities, with a good frontage facing the main road, and an inviting feel.

Retail Shops & Showrooms | Corporate Offices | Business Center Banks & ATM Restaurants | Fast Food Chains | Hospital/Clinic | Consulting Firms...& a lot more!





LOCATED AT ONE OF **ANAND'S** MOST  
DEVELOPED AREAS. **READY CLIENTELE.**  
**READY POSSESSION !**

### **SPECIAL FEATURES & FACILITIES**

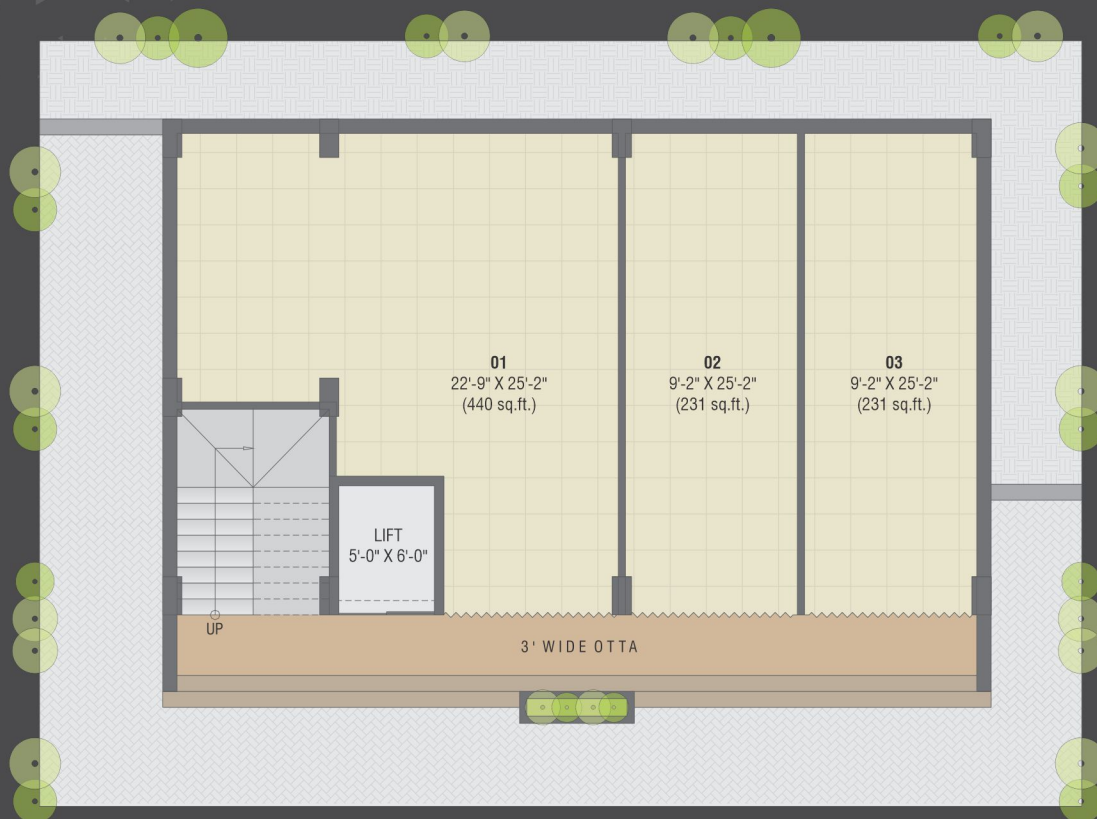
- Located in a Fully Developed Area
- Strategic commercial location suitable for all business activity.
- Tastefully done facade incorporating artistic configurations.
- Standard quality lift for easy vertical movement.
- Common toilets & provision for one water/drainage point for each unit.
- Large concrete / paved instant parking on Ground Floor area.



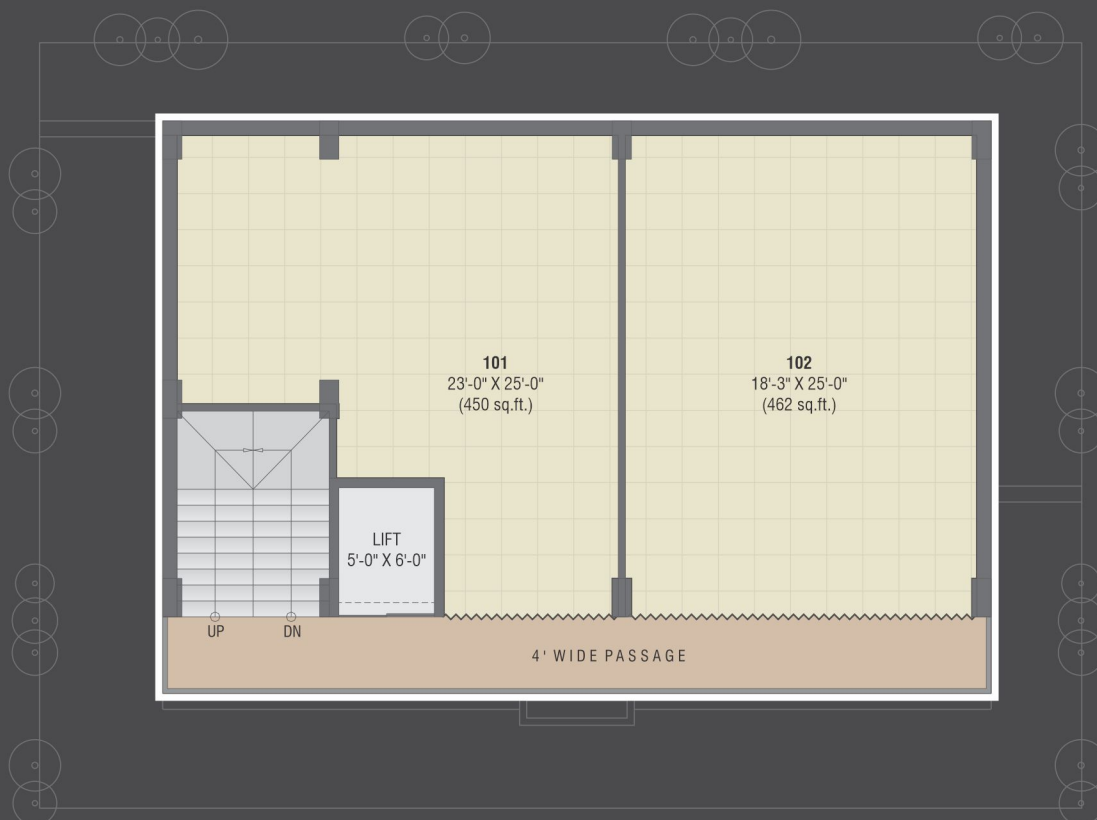




## GROUND FLOOR PLAN

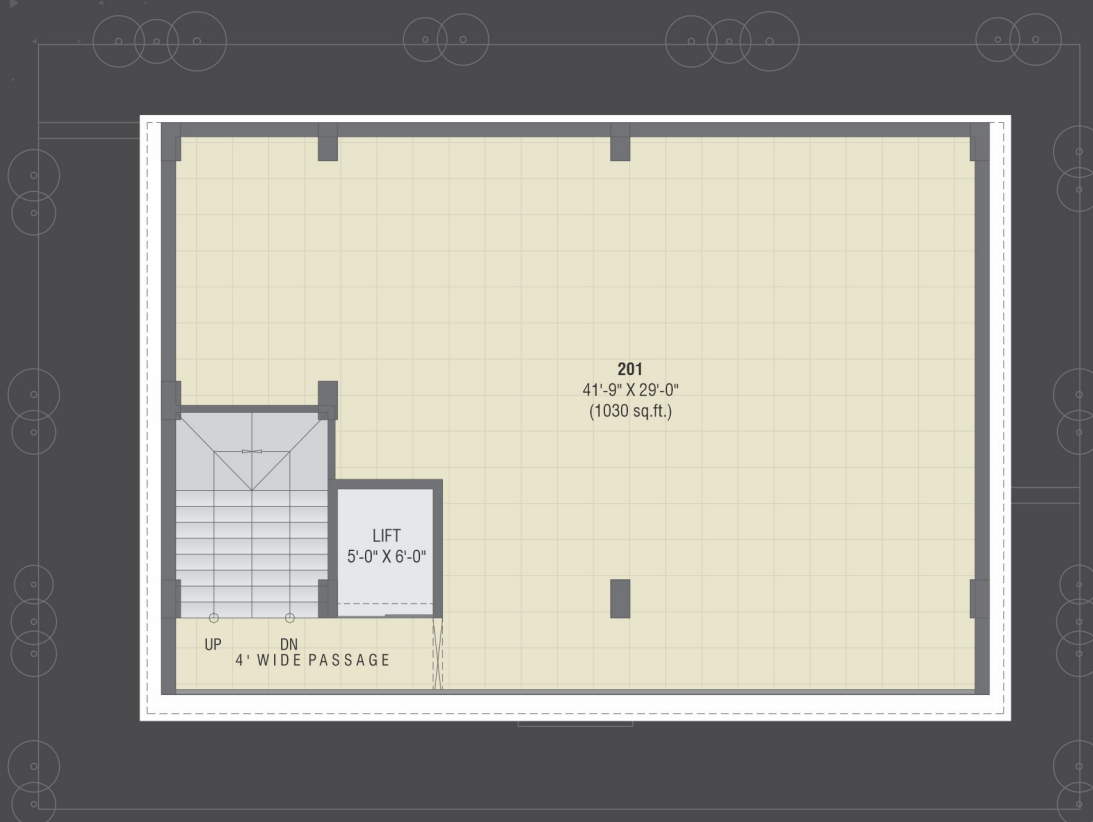


## FIRST FLOOR PLAN





## SECOND FLOOR PLAN



## THIRD FLOOR PLAN





# ELEGANTLY DESIGNED COMMERCIAL SPACES

## SPECIFICATIONS

### Structure & Wall Construction

- Earthquake resistance RCC framed structure design, internal & external masonry wall.

### Doors / Windows

- Flush door with both side laminate & safety locks / M.S. rolling shutter with color.
- Powder coated aluminum sliding / openable window.

### Flooring & Wall Cladding

- Vitrified tile flooring with skirting in all units.
- Natural stone / Vitrified tile flooring in common area.

### Electrical

- Concealed copper wiring & standard quality electrical fixtures and fittings. A.C. point in each shop and offices.





# KEY PLAN



**Veer-9**  
Premium Commercial Spaces

## A Project By:



## Developers: Mintmore Buildquick

### Site Address:

veer 9, Opp. Ortho Rab Hospital,  
Near Desai Corner, Indira Statue,  
100 Feet Road, Anand -388001

### Reg. Office:

A-1, H.M. Patel Complex,  
Nr. H.M Patel Statue,  
A.V. Road, Anand-388001  
(Gujarat).

Call: **98244 91791**  
**98244 90791**

Email: [realty@mintmore.org](mailto:realty@mintmore.org)

### Architect:



**MATUSREE DESIGN STUDIO**  
AR. MIHIR A GOSAI ID. SHRUJAL PATEL  
ARCHITECTURE PLANNING INTERIOR LANDSCAPE,  
MO. +91-9721077704 matusreedesignstudio@gmail.com

### Structural consultant:

Shyam Engineers

**Terms & Conditions:** 1. The following will be charged extra in advance/ as per government norms: (a) Stamp Duty & Registration Charges. (b) GST (as actual). (c) Maintenance Deposit. (d) Electrical infrastructure charge and Deposit for New Electric Connection. 2. If any new tax applicable by Central or State Government in future, it will be borne by the buyers/ members. 3. Possession will be given only after one month of settlement of all accounts. 4. Continuous default in payments leads to cancellation. The developers reserve all the rights to change the plan, elevation, specification or any details will be binding to all. 5. In case of delay in water supply, light connection, drainage work by the concerned authority, developers will not be responsible. 6. Changes in any structural design & changes in any external facade will not be permitted under any circumstances. 7. Internal changes will only be permitted with prior permission. 8. Outdoor AC units will be fitted as per provision provided in the designated place by the architect. 9. This brochure is for information purpose only. It does not form a part of the agreement or any legal document. The developer retains the right to alter the specification without any consent of the member. **10. In case of cancellation of the said unit/units, if any charges in the unit are executed on request of the purchaser, cost of charges will be borne by the purchaser and on account of such charges, if any further expenses are incurred to bring out of the unit in its original design/layout such expenses will also be deducted from the amount to be paid towards cancellation.**

**Disclaimer:** All plans are subject to amendments and approval by the relevant authorities. All photography and computer imagery are artist's impression and are provided for illustrative and indicative purposes only. While every reasonable care has been taken in providing this information, the developers cannot be held responsible for any inaccuracy. Subject to Anand Jurisdiction.